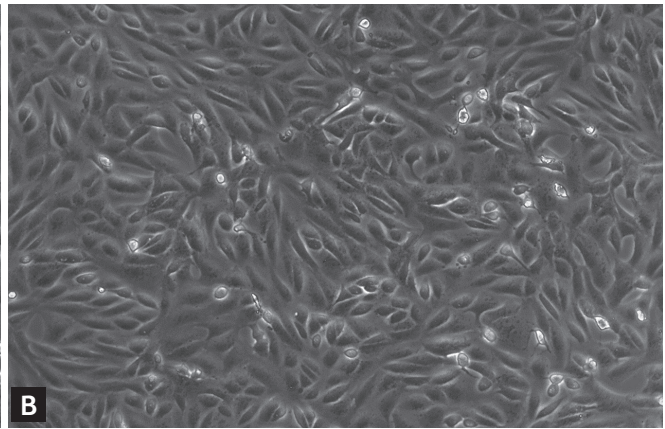
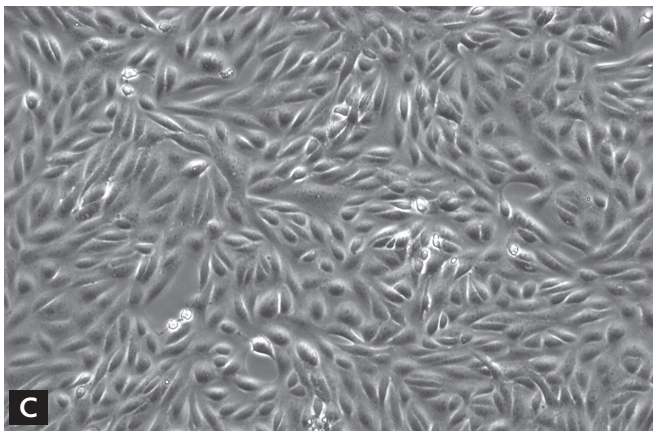


HCQ (1 µg/mL)



Lopinavir/ritonavir + HCQ (1 µg/mL)



Lopinavir/ritonavir + HCQ (2 µg/mL)

Supplementary Figure 1. Representative cytopathic effects of Vero cells after 48 hours of the inoculation of severe acute respiratory syndrome coronavirus 2 according to different antiviral treatment. (A) A 1 µg/mL of hydroxychloroquine (HCQ) base (expected from HCQ sulfate 400 mg daily), (B) 7.0/1.75 µg/mL of lopinavir/ritonavir (expected from 400/100 mg twice daily) plus 1 µg/mL of HCQ base, and (C) 7.0/1.75 µg/mL of lopinavir/ritonavir plus 2 µg/mL of HCQ base (expected from HCQ sulfate 800 mg daily).