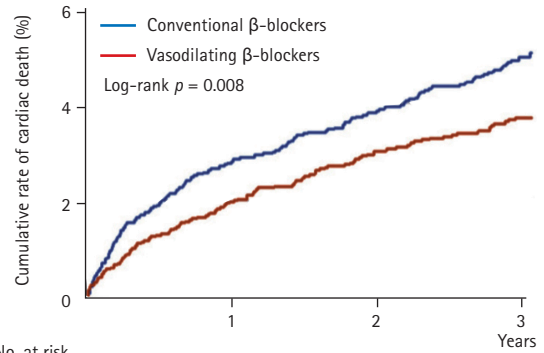


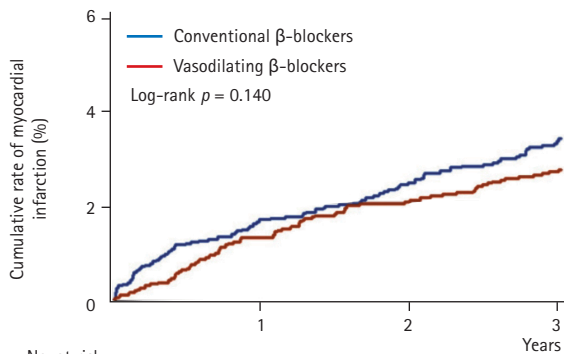
No. at risk		Years			
Conventional $\beta$ -blockers		3,661	3,342	3,153	1,881
Vasodilating $\beta$ -blockers		3,608	3,342	3,136	1,933

**A**



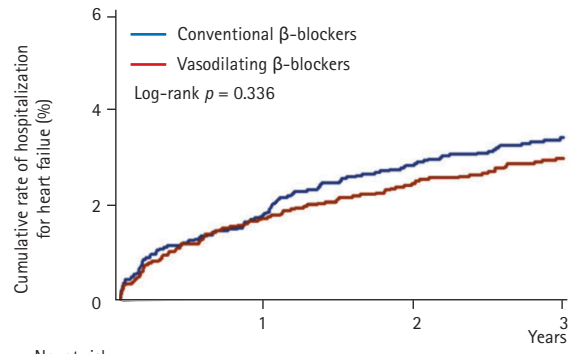
No. at risk		Years			
Conventional $\beta$ -blockers		3,661	3,440	3,292	1,981
Vasodilating $\beta$ -blockers		3,608	3,419	3,245	2,011

**B**



No. at risk		Years			
Conventional $\beta$ -blockers		3,661	3,410	3,250	1,954
Vasodilating $\beta$ -blockers		3,608	3,397	3,209	1,981

**C**



No. at risk		Years			
Conventional $\beta$ -blockers		3,661	3,395	3,230	1,941
Vasodilating $\beta$ -blockers		3,608	3,389	3,205	1,988

**D**

**Supplementary Figure 1.** Kaplan-Meier curves for 3-year clinical outcomes in vasodilating versus conventional  $\beta$ -blocker groups in the whole study population. (A) A composite of cardiac death, myocardial infarction, or hospitalization for heart failure. (B) Cardiac death. (C) Myocardial infarction. (D) Hospitalization for heart failure.