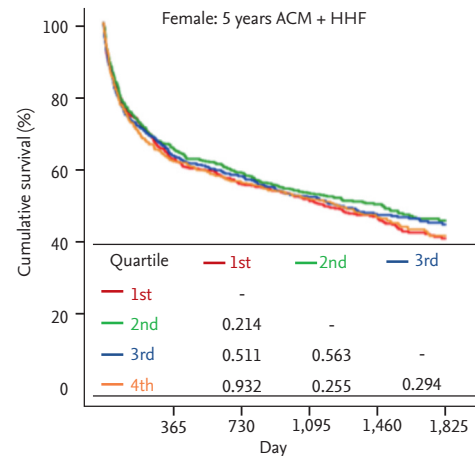


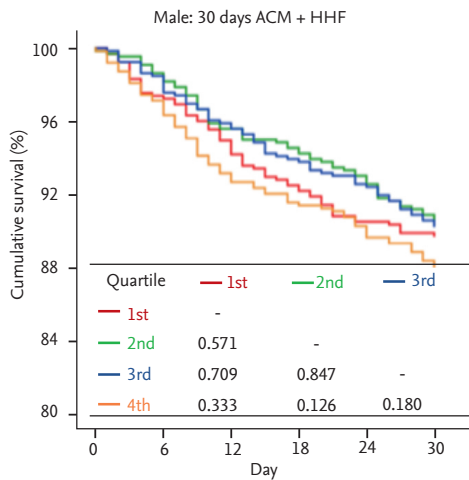
| | | | | | | |
|--------------|-----|-----|-----|-----|-----|-----|
| 1st quartile | 646 | 436 | 383 | 357 | 241 | 105 |
| 2nd quartile | 651 | 438 | 402 | 367 | 336 | 110 |
| 3rd quartile | 651 | 444 | 405 | 364 | 214 | 86 |
| 4th quartile | 622 | 385 | 330 | 299 | 188 | 87 |

A



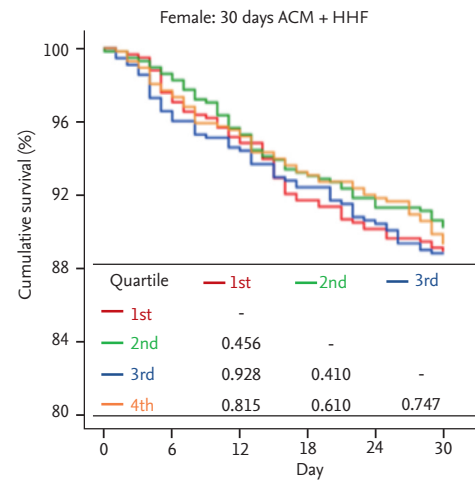
| | | | | | | |
|--------------|-----|-----|-----|-----|-----|----|
| 1st quartile | 575 | 358 | 319 | 295 | 185 | 85 |
| 2nd quartile | 567 | 374 | 335 | 303 | 185 | 80 |
| 3rd quartile | 546 | 349 | 317 | 286 | 171 | 84 |
| 4th quartile | 556 | 346 | 314 | 286 | 179 | 72 |

B



| | | | | | | |
|--------------|-----|-----|-----|-----|-----|-----|
| 1st quartile | 646 | 628 | 611 | 595 | 582 | 578 |
| 2nd quartile | 651 | 642 | 621 | 613 | 602 | 588 |
| 3rd quartile | 651 | 641 | 623 | 608 | 599 | 586 |
| 4th quartile | 622 | 602 | 575 | 565 | 557 | 545 |

C



| | | | | | | |
|--------------|-----|-----|-----|-----|-----|-----|
| 1st quartile | 572 | 557 | 542 | 522 | 513 | 507 |
| 2nd quartile | 567 | 559 | 542 | 528 | 520 | 513 |
| 3rd quartile | 546 | 527 | 516 | 504 | 494 | 484 |
| 4th quartile | 556 | 542 | 529 | 516 | 509 | 497 |

D

Supplementary Figure 1. Composite outcomes of all-cause mortality (ACM) and hospitalization due to heart failure (HHF) according to corrected QT (QTc) quartiles in acute heart failure patients. (A) Male: 5 years ACM + HHF. (B) Female: 5 years ACM + HHF. (C) Male: 30 days ACM + HHF. (D) Female: 30 days ACM + HHF. The Kaplan-Meier curves showed 5-year and 30-day outcomes in male and female patients.